



In the batimbo kingdom

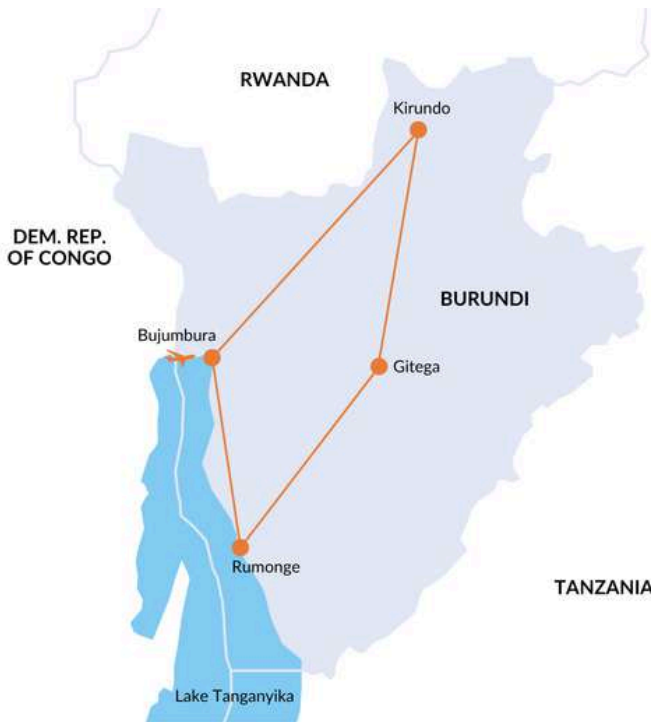
BURUNDI



9 days

27 June - 05 July 2026

English speaking tour leader



The 'unforgettable' of the trip:

- **Lake Tanganyika**, between relaxing beaches and artisanal fishing
- The **Karera waterfalls** and the **sources of the White Nile**
- The **drummers of Gishora**, keepers of the tradition of the kingdom of Burundi
- **Birdwatching** around the 'island of birds'
- Placid landscapes, verdant hills and **tea plantations**
- **Rusizi National Park**, where you can spot hippos and crocodiles
- **Bujumbura**, the country's sleepy capital, amid colonial architecture and markets



Kanaga Africa Tours - info@kanaga-at.com
+223 76723946 - www.kanaga-at.com

In the batimbo kingdom

BURUNDI

Day 1: Saturday 27 June

Outward flight/Bujumbura (BJM)

Overnight flight to Bujumbura, overnight on board.

Day 2: Sunday 28 June

Bujumbura (Lake Tanganyika)

Arrival at Bujumbura airport, clearance of formalities and meeting with Kanaga Africa Tours staff. Accommodation at the Safari Gate Hotel or similar. In the afternoon, relaxation on the shores of LAKE TANGANYIKA and, if time permits, first visits to the city. Located in one of the great pits of the Rift Valley, Lake Tanganyika is the deepest lake on the continent, first visited by Europeans in 1858, during Burton and Speke's famous expedition in search of the source of the Nile. Fishing is an ancient activity on the lake shore, where pelagic fish such as ndagalas (silver sardines) and large predators such as sangalas (Nile perch) cohabit. Alongside artisanal fishing, practised by villagers with pirogues made from tree trunks and mainly at night with the use of a lamp or torch, there is industrial fishing with purse seines or trawls, certainly more fruitful but also more invasive. The lake is also one of the country's tourist attractions, with equipped beaches. But beware, it is not uncommon for relaxation to be interrupted by the appearance of a hippo or crocodile! Dinner and overnight stay in the hotel, in double rooms with services.

Day 3: Monday 29 June

Bujumbura/Rumonge

Breakfast at the hotel and departure in the direction of Rumonge. Visit the memorial stone of explorers Livingstone and Stanley, who are said to have met at this exact spot. In the afternoon, visit the KIGWENA RESERVE. Arrival in Rumonge, accommodation at the Blue Bay Hotel or similar, dinner and overnight in double rooms with services.



Kanaga Africa Tours - info@kanaga-at.com
+223 76723946 - www.kanaga-at.com

In the batimbo kingdom

BURUNDI

Day 4: Tuesday 30 June

Rumonge/Gitega

Breakfast at the hotel. Departure southwards in the direction of the KERARA WATERFALLS, consisting of three main falls, which can be visited along a rough (often muddy) path, but where one can be rewarded not only by the splendid view, but also by encounters with guenons and numerous birds. A short distance from the waterfalls are the WHITE NILE SPRINGS, much sought after over the centuries and finally discovered in 1938 by Waldecker, more than 6,000 kilometres from the delta of the river that flows into the Mediterranean Sea. The site is marked by the presence of a large grey commemorative pyramid, on which is the Latin inscription *Caput Nili*. Continue to Gitega, among green hills, with a stop en route at the Germans' cave. Accommodation at the Tropitel hotel or similar, dinner and overnight in double rooms with services.

Day 5: Wednesday 01 July

Gitega/Kirundo

Breakfast at the hotel. Visit the town of Gitega, in an area that between the 16th and 17th centuries was the kingdom of Burundi, created by the founding *mwami* (king) Ntare Rushatsi. Several sites, such as those of Rubumba, Jurwe and Higiyo, testify to the greatness of this ancient kingdom, but most of all it is the *batimbo*, the GISHORA DRUMS, guardians of tradition, who still revive the ancient splendour. These were key figures in the monarchy, as they guarded its mystical secrets and managed the traditional cults. The *ingoma* (drums) were carved in clearly defined numbers, and each had a specific function, and could only be played in specific circumstances and places. For example, the Karyenda came out of its sanctuary only once a year on the occasion of the *muganuro*, while the Rukinzo, which followed the king everywhere, was played every day, and the Inakigabiro played during the sowing season. Gitega was also the scene of colonisation, first by Germans (who founded the town in 1912 under the name Kitega) and then by Belgians (who kept it as the capital of the country until independence). We visit the national museum and attend a drumming performance. Continuation to Kirundo, where we can watch the traditional Intore dance. Accommodation at the Rama Hotel or similar, dinner and overnight in double rooms with services.



In the batimbo kingdom

BURUNDI

Day 6: Thursday 02 July

Kirundo/Bugarama

Breakfast at the hotel. Boat trip on "BIRD LAKE" to admire the local birdlife. Departure for the capital, with a visit en route to the Teza tea plantations and a village of sedentary Batwa Pygmies. Arrival in Bugarama and check-in at the Green Park Resort or similar, dinner and overnight stay in twin rooms with toilets.

Day 7: Friday 03 July

Bugarama/Bujumbura

Breakfast at the hotel. Visit to the "royal capital" of MURAMYA and the historic site of KIGANDA. Departure for BUJUMBURA and a city tour (colonial architecture, viewpoint). Check-in at the Safari Gate Hotel or similar, dinner and overnight stay at the hotel.

Day 8: Saturday 28 June

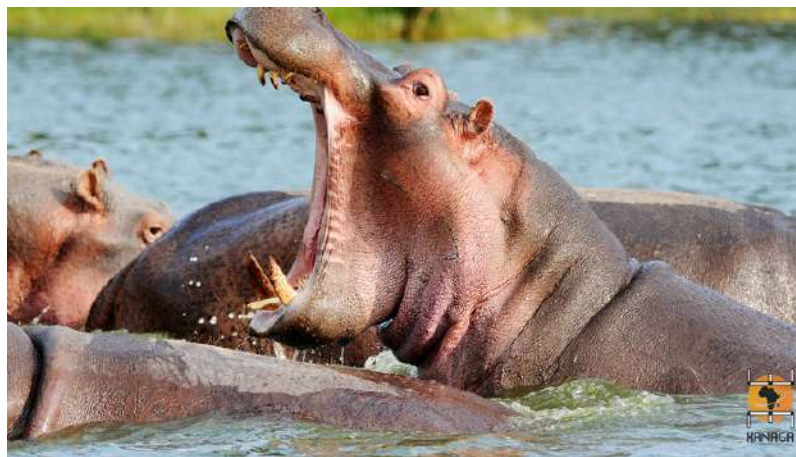
Bujumbura/Rusizi/Bujumbura (BJM)/Return flight

Breakfast at the hotel. Departure for RUSIZI NATIONAL PARK, not far from the border with the Democratic Republic of the Congo. This park comprises a lowland ecosystem featuring lagoons and temporary ponds, and an area of palm groves and semi-arid savannahs in the northern part (known as Rukoko). Its proximity to the expanding capital was one of the reasons, alongside poaching, for the drastic decline in wildlife over the last seventy years (in 1950 there was a herd of around 200 elephants, but today they have completely disappeared). The park remains, however, rich in birdlife, with over 350 different species, numerous hippos, crocodiles and Nile monitor lizards, and rare jackals and *sitatunga* antelopes. Transfer to the airport, end of services.

Day 9: Sunday 29 June

Return flight

Arrival at the destination airport.



In the batimbo kingdom

BURUNDI

9 days

27 June - 05 July 2026

English speaking tour leader

**Individual participation fee in double room
(min. 4/max. 12 pax)**

2,690 €/pax



Supplements:

- Enrollment fee: **free!**
- Single room: **230 €**
- Service evisa: **130 €/passport**

The fee includes:

- English speaking tour leader (from 7 pax);
- English or French speaking local guides;
- Visits and excursions as scheduled;
- Transfers by minibus or microbus, including drivers, fuel and tolls;
- Half-board meals as mentioned in the itinerary (breakfast and dinner);
- 6 nights in hotels, in double rooms as mentioned in the itinerary.

The fee does not include:

- The visa for Burundi;
- Insurance for cancellation, health, luggage;
- Air flights;
- Drinks and mineral water;
- All lunches and meals not mentioned in the itinerary;
- Photographic tips;
- Tips and expenses of a personal nature;
- Everything mentioned in 'Supplements';
- Anything not expressly mentioned in "the fee includes".