



Equatoria Tribes

SOUTH SUDAN

Photo by A. Alberghina



12 days

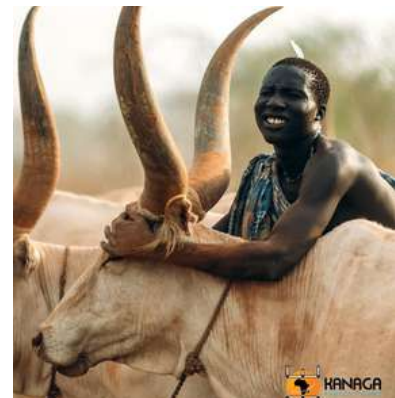
24 February - 07 March 2026

English speaking guide



The 'unforgettable' of the trip:

- The majestic **White Nile** and the bustling Konyo Konyo market in **Juba**
- In the small kingdom of **Lotuko**, admiring superb traditional architecture
- At the foot of the **Boya Hills**, to meet the Larim ethnic group
- **Toposa** breeders and the typical 'boma'
- The tribal dances of the **Jiye** herders, with their scarification and piercing
- Life in the camp of the **Mundari**, zebu breeders



Kanaga Africa Tours - info@kanaga-at.com
+223 76723946 - www.kanaga-at.com

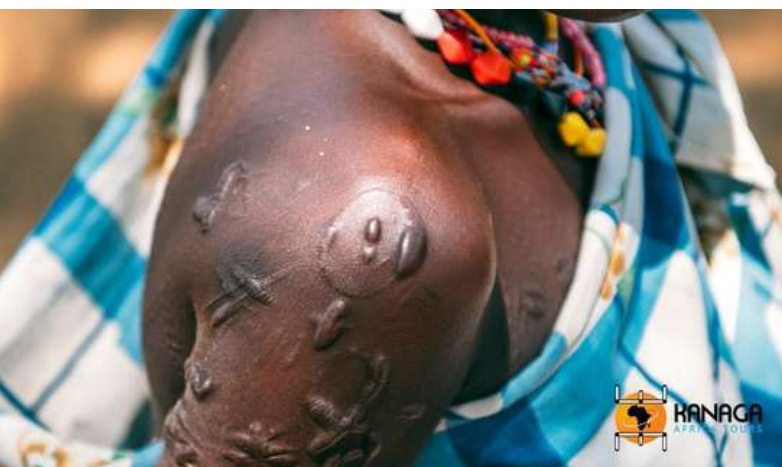
Ethnographic Journey in South Sudan

In the regions of Central and Eastern Equatoria, there are dozens of ethnic groups and sub-groups, considered among the most isolated and poorest in the world, due to the paralysis the country has been in for decades, but very rich in traditions and free from the flattening of modern times, which is often the enemy of peoples' identity cultures.

A common characteristic of these strongly identity-driven peoples, and of many other tribes inhabiting the South Sudanese lands, is undoubtedly their deep attachment to their ancestral traditions, which have been perpetuated intact for centuries, motivated by animist beliefs and very ancient cults, despite the spread of the Christian religion in South Sudan. Focusing on propitiatory sacrificial ceremonies, initiations and rites of passage to adulthood, and ancestor worship, their rites are mainly governed by the cyclical nature of the rains and natural events, officiated by a spiritual leader. To visit the villages and rural communities of what was called Equatoria by the first settlers is to plunge into an authentic dimension that goes far beyond history, into a temporal sphere that still belongs to myth and nature. This is due to the forced, but also partly desired, isolation of these populations, in a country that has particularly suffered from international and internal contrasts, but that today is increasingly moving towards the coveted stability.

A trip off the tourist track, for real travellers

A trip to South Sudan requires strong motivation and an excellent spirit of adaptation. The ethnographic treasures that this country holds are not easily accessible, the organisation and logistics are complex, and a bit of luck is often required to be repaid for the efforts made during the tour (trying as much as possible to participate in spontaneous ceremonies). There will be long transfers, you will often travel on uneven tracks, you will have to wait patiently at checkpoints, you will have to adapt to possible itinerary changes ... In short, an experience for 'true travellers' who are not discouraged by the complexity of the African reality, aware that the possibility of spending a few hours in the remote villages of the Toposa, or watching the dances of the Jiye tribe, or even admiring the return to camp of hundreds of zebu at Mundari at sunset, are privileges reserved for the few, and precious gifts that will certainly repay the hardships of the journey.



Day 1: Tuesday 24 February

Outward flight/Juba (JUB)

Evening flight to Juba.

Day 2: Wednesday 25 February

Juba

On arrival, meet the Kanaga Africa Tours staff, assist with the exchange of Euros and the purchase of a local phone card. Afternoon dedicated to visiting JUBA, Africa's youngest capital: the vantage point overlooking the White Nile and the colourful Konyo Konyo market. Overnight stay at the Royal Palace Hotel or similar, in double rooms with private services.

Day 3: Thursday 26 February

Juba/Torit/Lotuko Kingdom

Breakfast at the hotel and transfer to TORIT. Clearance of formalities and on to the LOTUKO KINGDOM, a people who settled in the area in the 15th century, becoming sedentary and living off agriculture, livestock and fishing. Their economy and spirituality revolves around the cyclical nature of the seasons, in which the figure of the chief witch doctor, who officiates at propitiatory rites for the abundance of rain and harvests, is of particular importance. Picnic lunch en route. First visit to the village, where we will also have time to admire the sunset. Dinner prepared by our cook and overnight stay in double igloo tents.



Welcome to South Sudan!



Juba and the White Nile



Lotuko Kingdom

Day 4: Friday 27 February

Lotuko/Larim Tribe

After breakfast we return to the village to watch a traditional Lotuko dance, and meet the queen. Transfer to Camp 15, a market where the DIDINGA and Larim TRIBES meet daily to trade and exchange information. Picnic lunch. We continue to the majestic BOYA HILLS, at the foot of which are the LARIM VILLAGES, which used to live on the hills but descended to the valley in the late 1990s in search of better pastures for their cattle and to get closer to water points, which are very scarce in the region. The Larim scarify their bodies and faces, pierce their noses, ears and lips, and often smoke tobacco from wooden and metal pipes. Their huts, built of wood, are often decorated with shells and designs. Dinner prepared by our cook and overnight stay in double igloo tents.



Larim Girl



Landscapes of the Boya Hills

Day 5: Saturday 28 February

Larim Tribe

The whole day is dedicated to visiting the LARIM VILLAGES, where we can also assist to traditional dances. Breakfast, lunch and dinner at the camp, overnight stay in double igloo tents.



Larim Village



Day 6: Sunday 01 March

Larim Tribe/Kapoeta

Breakfast at the camp and greetings with the Larim tribe. Transfer to Kapoeta, accommodation at Hotel Kuleu or similar, lunch and time at leisure for a shower and a well-earned rest. In the afternoon we visit the KAPOETA market, which despite being a small town is very lively and interesting, and allows us to admire the aesthetic beauty of the different ethnic groups that frequent it. Dinner at the hotel and overnight stay in double rooms with services.



Toposa woman

Day 7: Monday 02 March

Kapoeta/Toposa Tribe

Breakfast at the camp and transfer to the region inhabited by the TOPOSA TRIBE, where we will visit a boma, a typical fenced village with cattle inside, and meet the elders and the local chief, the women with their scarified faces and bodies, and watch traditional dances. The Toposa belong to the Ateker group, which includes the Turkana in northern Kenya, the Karamajong in northern Uganda and the Nyangatom in Ethiopia. Lunch and dinner at the camp, overnight in double igloo tents.



Toposa Dance



Toposa woman with a pipe



Day 8: Tuesday 03 March

Toposa/Jiye Tribe/Toposa

Breakfast at the camp and transfer to the region inhabited by the JIYE TRIBE. The Jiye pastoralists, belonging to the large group of Karamojong and Turkana peoples, with their characteristic tribal dances and ceremonies (which we will witness), inhabit the lands around Kapoeta. Famous for their walled villages, whose dwellings are decorated with animal skulls, the Jiye are organised in strongly hierarchical societies, in which the aesthetic cult of the body is a preponderant part, according to a complex symbolism, expressed in elaborate decorations and showy scarifications on the face and body, indicative of the status and role each individual occupies in society. Picnic lunch. Return to the tented camp, dinner prepared by our cook and overnight stay in double igloo tents.



Jiye Hut



Jiye woman with scarification

Day 9: Wednesday 04 March

Toposa Tribe/Kapoeta/Torit

Breakfast at the camp and greetings with the Toposa population. Transfer to Kapoeta, lunch at the hotel. Continuation to TORIT, accommodation at the Hotel Torit or similar, dinner in a local restaurant and overnight stay in double rooms with services.



Jiye Man

Day 10: Thursday 05 March

Torit/Juba/Mundari Tribe

Breakfast at the hotel and transfer to JUBA. Lunch in a restaurant in the capital. In the afternoon, we continue to a camp of the MUNDARI ethnic group near Terakeka, their capital. We will meet the tribal leaders, and admire the hundreds of long-horned zebu returning before sunset after a day's grazing. Dinner prepared by our cook and overnight stay in double igloo tents.



Mundari Tribe



Day 11: Friday 06 March

Mundari Tribe/Juba (JUB)

A visit to the MUNDARI camp at first light: without doubt one of the most fascinating and exciting experiences in South Sudan. A plunge into a past that is still incredibly relevant, amidst surreal scenarios of ash-strewn shepherds and cattle herds of hundreds of head, whose indefinable weaves of long crescent-shaped horns are lost amidst the soot emitted by the large manure pyres, in a thick blanket of smoke that shields the sun and darkens the sky, tinging the atmosphere with silvery and orange tones. An almost dreamlike vision that lovers of photography will particularly appreciate. Breakfast and return to the capital, free lunch in the hotel. Some day use rooms for a shower before transferring to the airport in time for your return flight. End of services.



Mundari Boy



Mundari Tribe

Day 12: Saturday 07 March

Return flight

Arrival at the destination airport.



Equatoria Tribes

SOUTH SUDAN

12 days

24 February - 07 March 2026
English speaking guide

Individual participation fee in double room/tent (min. 8 - max. 12 pax)

4,590 €/pax

**in promotion at € 4,490
for bookings before 24/11/2025**

Supplements:

- Enrollment fee: **free**
- Single room: **€ 230**
- Permits, invitation letter, eVisa: **€ 160**

The fee includes:

- English speaking tour leader;
- English-speaking local guide;
- Visits and excursions as scheduled;
- All transfers by 4x4 (max. 4 pax/car) or 4x4 safari (max. 7 pax/car), including drivers, fuel and tolls;
- Full board meals (except D2 and lunch D11 in Juba);
- Field material;
- Cook and field kitchen;
- 9 nights (3 in hotels and 6 in igloo tents) in a double room/tent;
- Day use in Juba on D11 (1 room per 4 pax).

The fee does not include:

- The visa for South Sudan;
- The ALIEN tax (\$40 on arrival);
- Travel/health/baggage cancellation insurance;
- Air flights;
- Transfers to/from airport with companies other than the recommended one;
- Drinks and mineral water;
- Meals not included in the itinerary;
- Taxes and photo tips outside the villages/activities included in the itinerary;
- Tips and expenses of a personal nature;
- Everything mentioned in 'Supplements';
- Anything not expressly mentioned in "the fee includes".